

# Community Wildfire Safety Update

Rossmoor Senior Community

August 31, 2023



# Safety

## Preparedness Tips

Always be prepared in case of a natural disaster or an emergency

---

Build a disaster supply kit for you, your family or your business

---

Be sure to include food, water, medication, flashlights, first aid kits, a list of emergency contacts and more

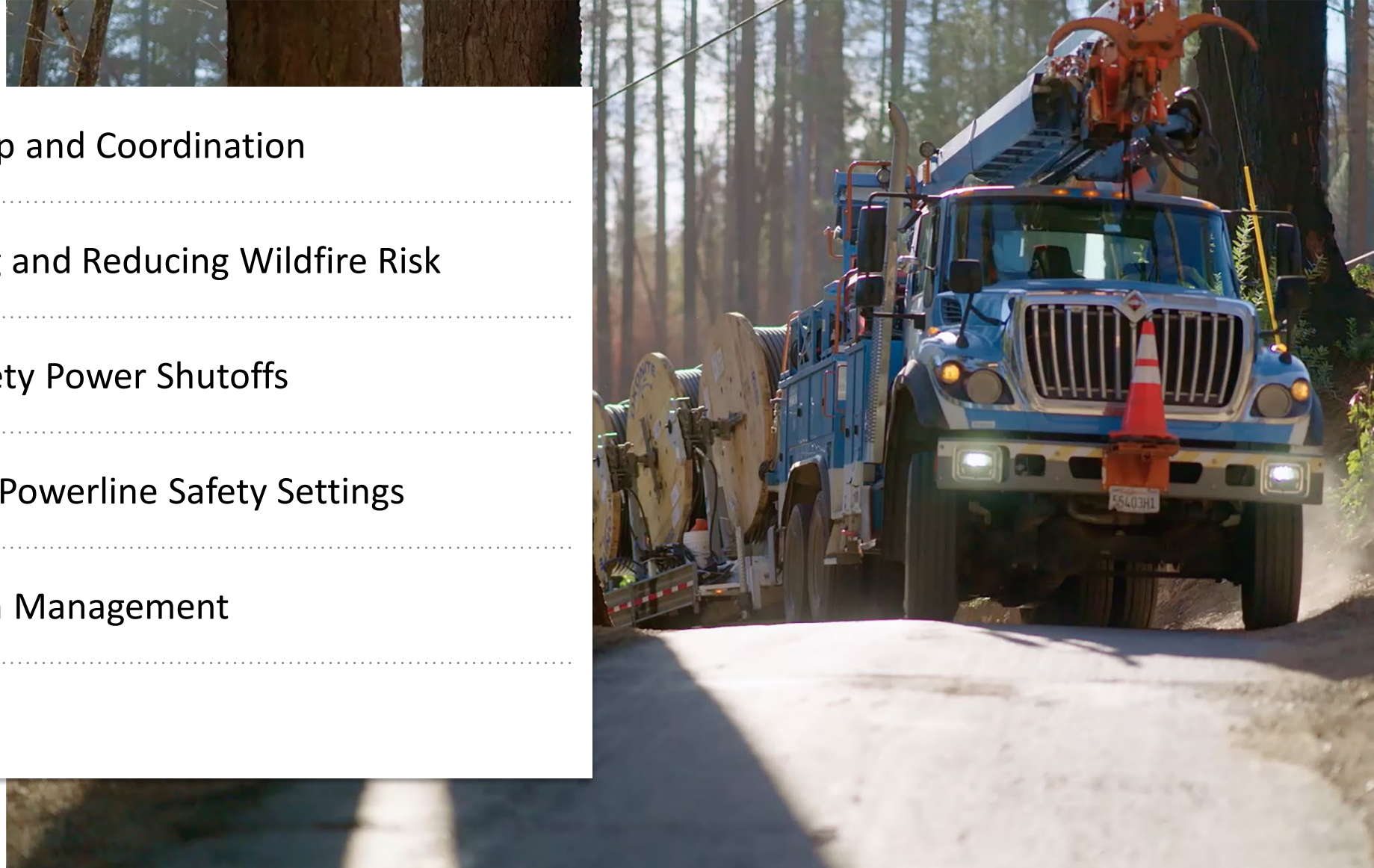
---

Visit [safetyactioncenter.pge.com](https://safetyactioncenter.pge.com) to help prepare for an emergency



# Topics For Discussion

- 1 Partnership and Coordination
- 2 Identifying and Reducing Wildfire Risk
- 3 Public Safety Power Shutoffs
- 4 Enhanced Powerline Safety Settings
- 5 Vegetation Management
- 6 Q&A



**We are privileged to serve your community and partner together. Through our ongoing coordination, we are identifying opportunities to improve reliability and safety in Rossmoor.**

**These include:**

- ✔ Scheduling bi-annual meetings with the Golden Rain Foundation leadership to share feedback and lessons learned
- ✔ Expediting a gas project and restoration of the crosswalk on Stanley Dollar Drive to ensure pedestrian safety
- ✔ Prioritizing restoration of circuits serving the Rossmoor community during storm outages

PG&E Meets with Rossmoor Community Members



Safety Work on Towers in Your Community



# Golden Rain Foundation

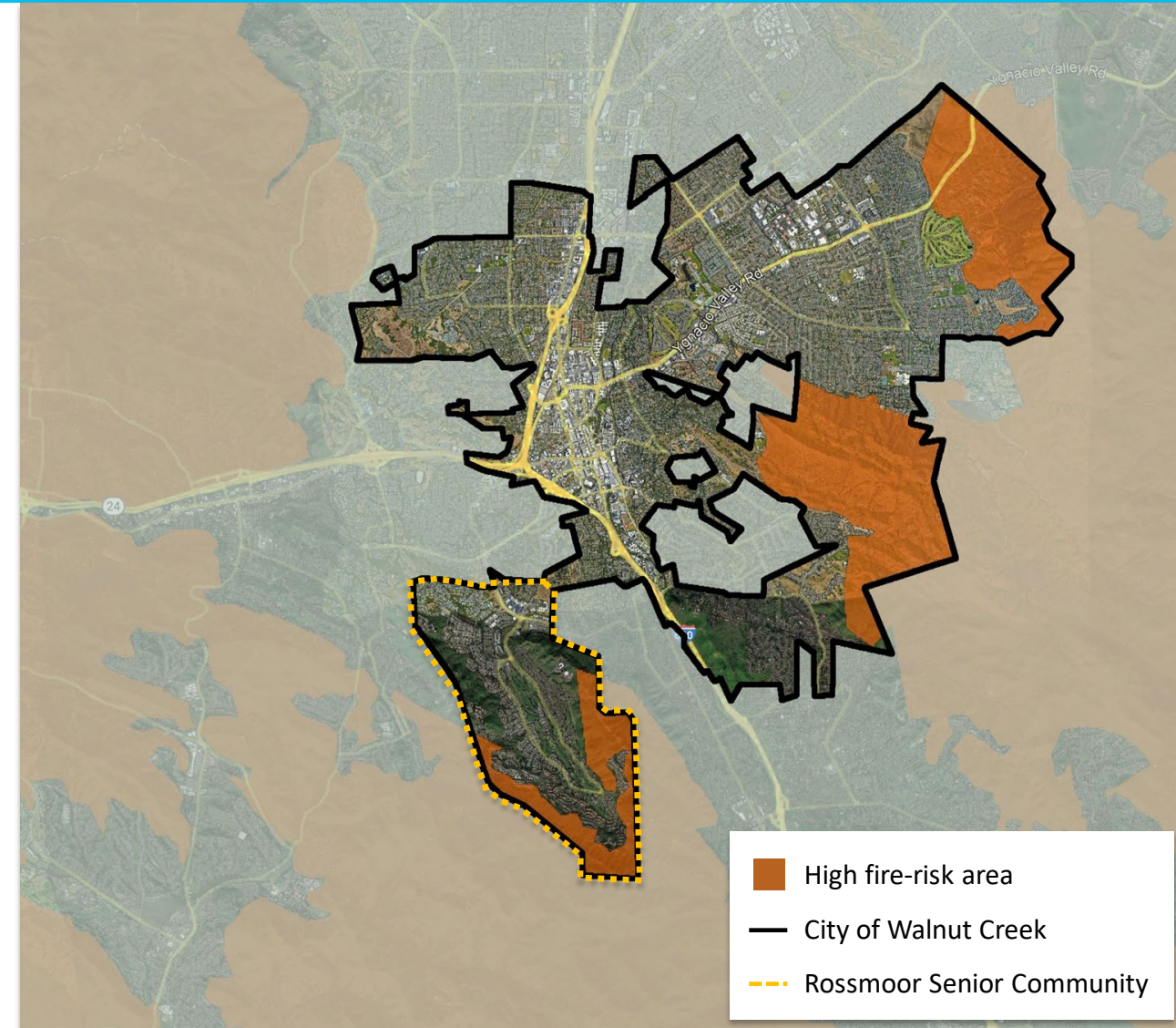


# Identifying and Reducing Wildfire Risk

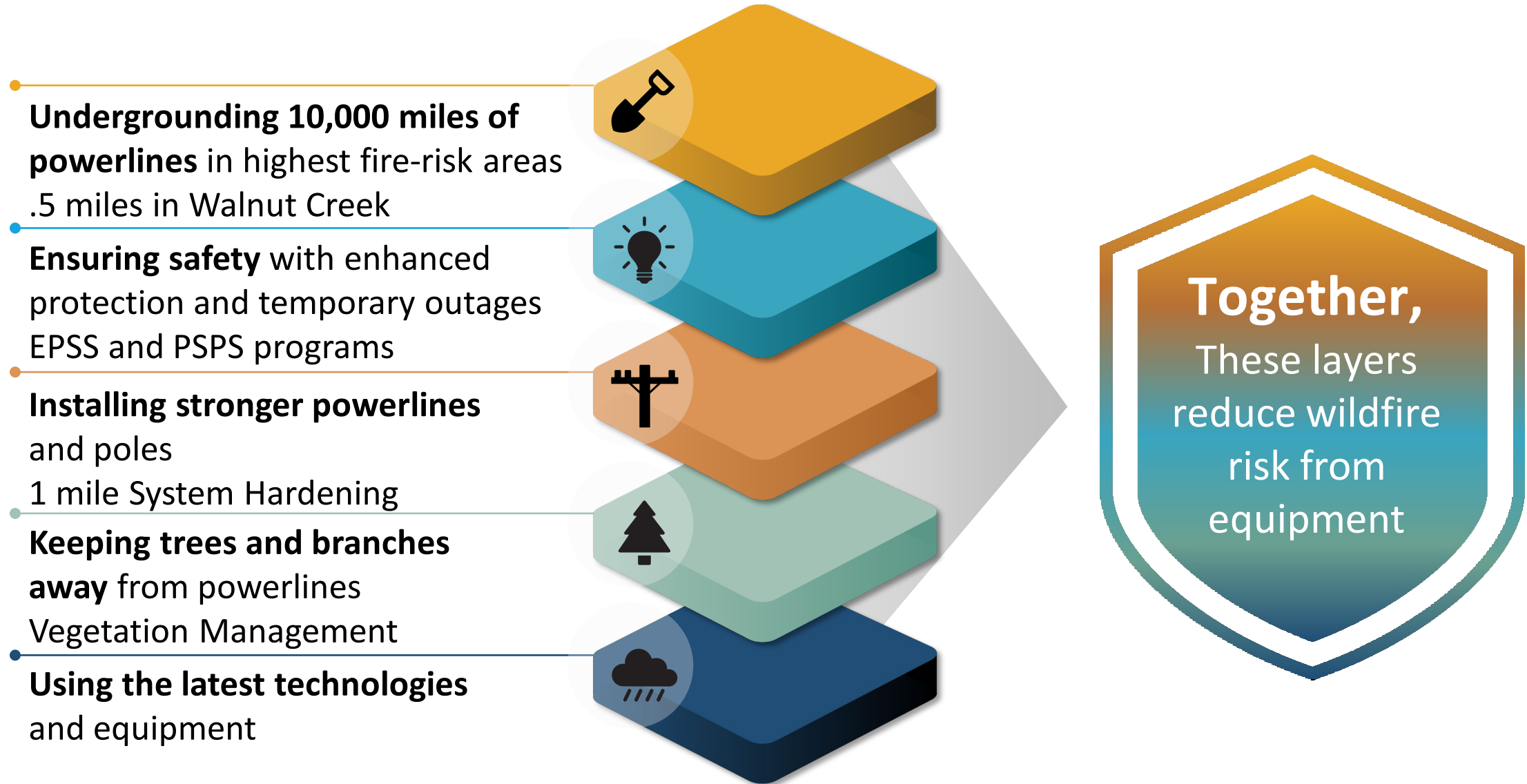




**PG&E's high fire-risk area map** helps us target wildfire mitigation efforts in the areas and communities at highest risk.



# Layers of Wildfire Protection



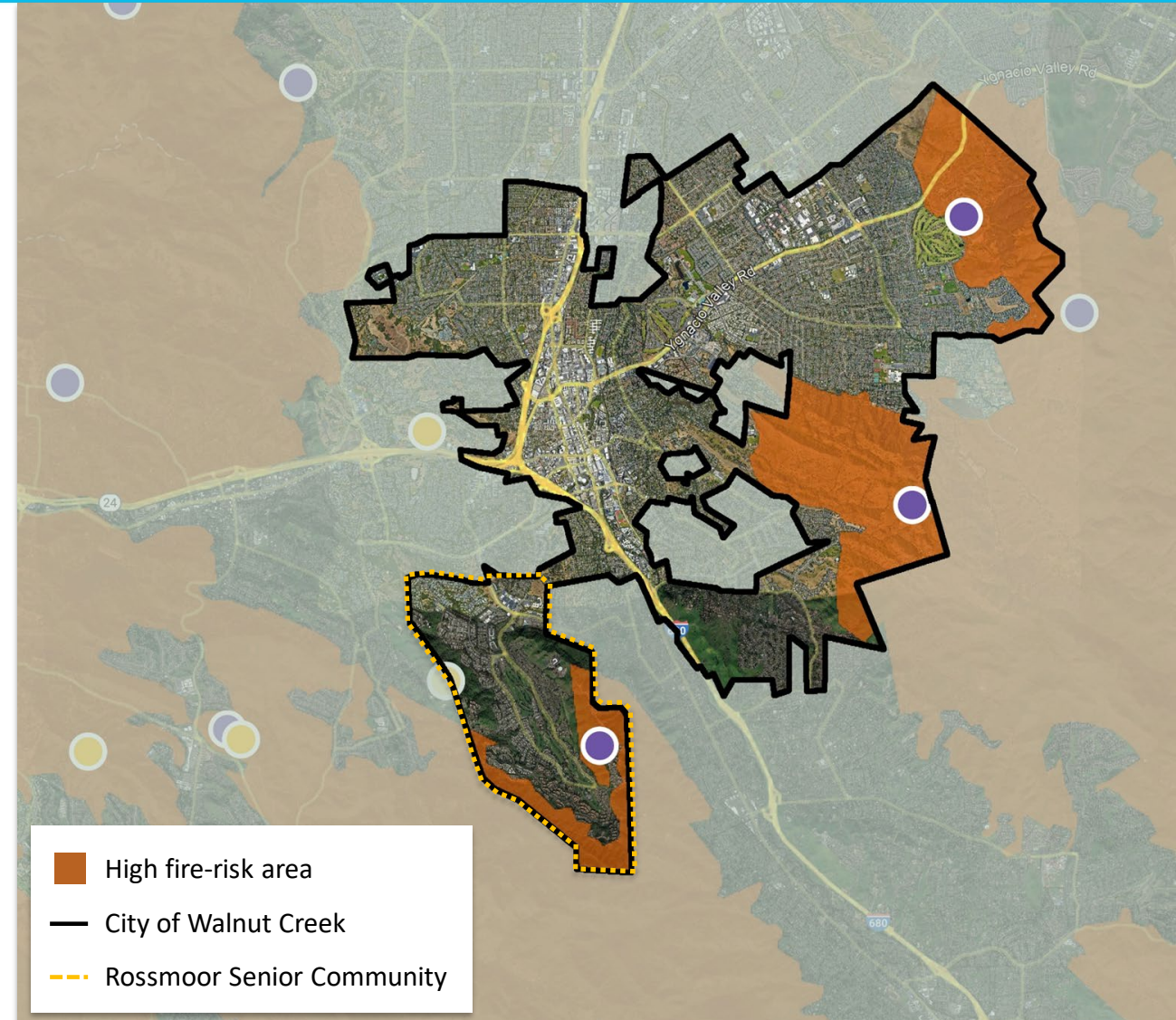


# Situational Awareness in the City of Walnut Creek

To better predict and respond to wildfire risk and severe weather around the clock, we built the largest utility-owned weather monitoring network in the country.

- Weather stations installed through 2022  
 1,300 Weather Stations Total
 | 3
- High-definition cameras near the City of Walnut Creek  
 600 HD cameras Total
 | 4

i Customers can view our interactive weather map at [pge.com/weather](https://pge.com/weather)



Data as of 7/10/2023. Locations are approximate and may overlap.

# Public Safety Power Shutoffs



# What is a Public Safety Power Shutoff?

High winds can cause tree branches and debris to contact energized electric lines, damage our equipment and cause a wildfire.

**To prevent wildfires, we may need to turn off power as a last resort.**





# What Conditions Could Lead to a PSPS?



**Low humidity levels of 30% and below**



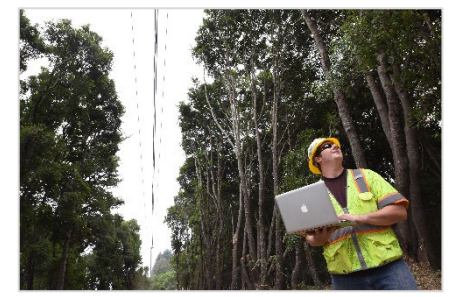
**Forecasted high winds above 19 mph and gusts above 30-40 mph**



**A Red Flag Warning issued by the National Weather Service**



**Condition of dry material on the ground and low moisture content of vegetation**



**On-the-ground, real-time observations**



# How Are Customers Notified for a PSPS?

## When We'll Notify

**Watch** ✓ 48-24 hours before power is turned off

**Warning** ✓ 4-1 hours before power is turned off

✓ When power is turned off

✓ After weather has passed

✓ If estimated restoration time changes

✓ Daily until power has been restored

## How We'll Notify

**Automated calls, texts and emails (available in 16 languages).**

We will also use pge.com, social media and will inform local news and radio.

 @pacificgasandelectric

 @pacificgasandelectric

 @PGE4Me

## How To Receive Notifications For Any Address

Anyone can sign up for **address alerts in 16 languages** to receive PSPS notifications for any location, such as their work or child's school.

Enroll at: [pge.com/addressalerts](https://pge.com/addressalerts)

*Annual registration is required.*



# Enhanced Powerline Safety Settings

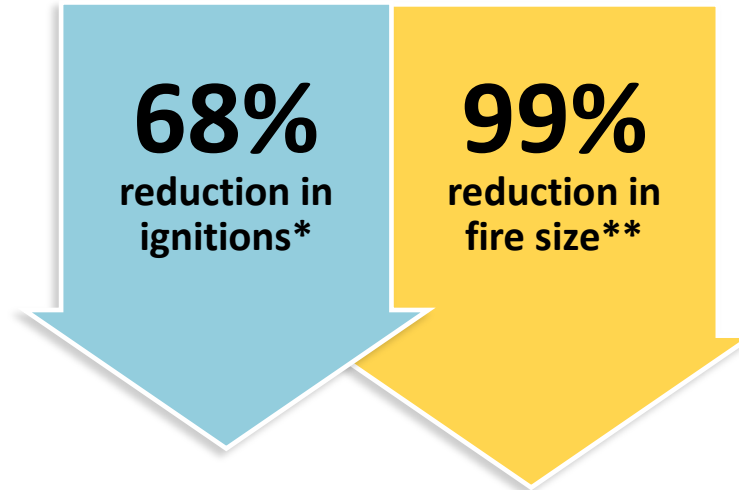


## How It Works

Turning off power within one-tenth of a second if a tree branch or other object strikes the line.

## Why We Do It

Stopping wildfires before they have a chance to start.

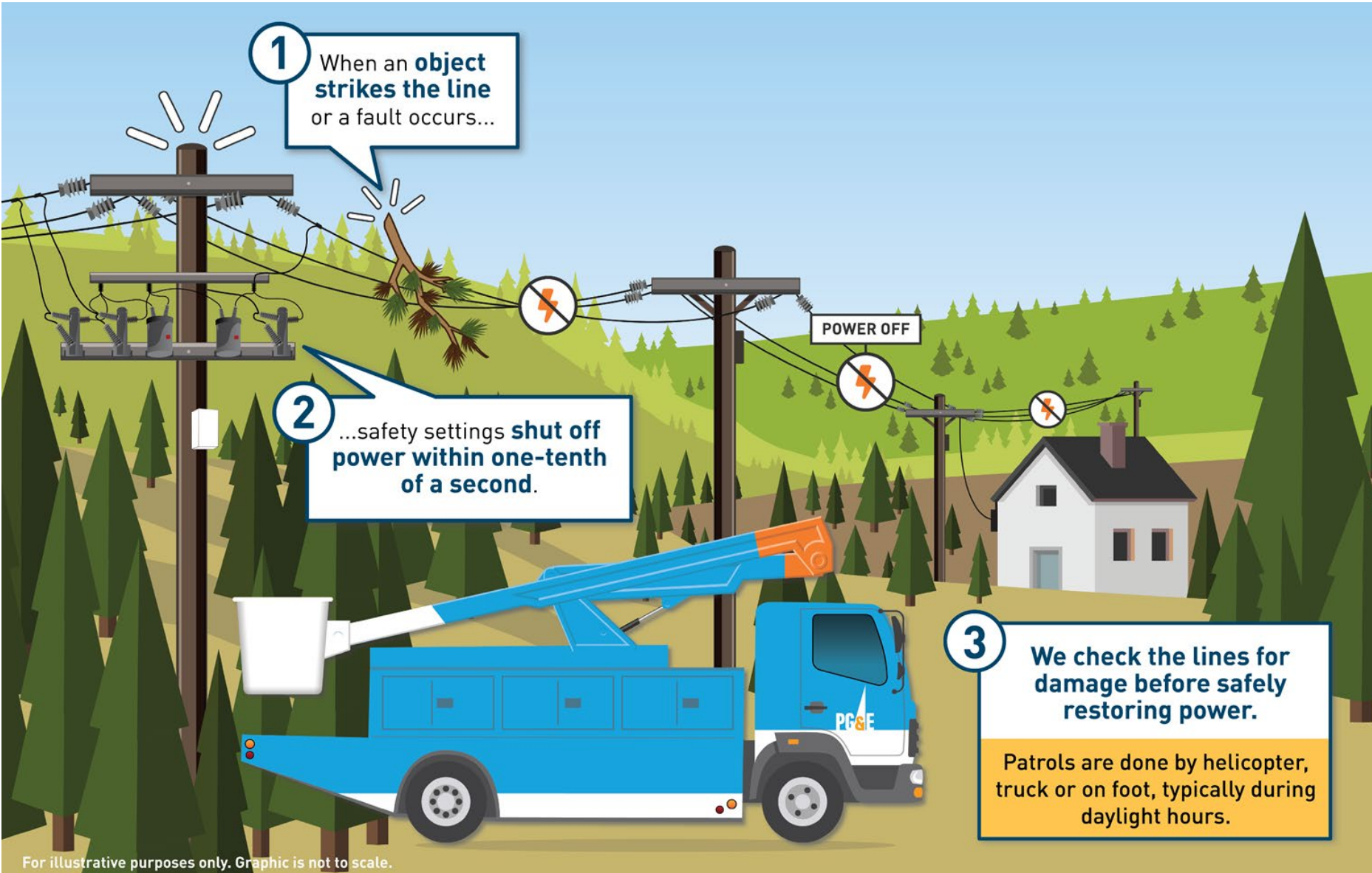


*Data is approximate; \*Based on 2022 performance for CPUC-reportable ignitions in HFTD compared to 2018-2020 weather-normalized performance; \*\*Relative to the 2018-2020 average*



**SAFETY SETTINGS IN ACTION IN NAPA COUNTY**

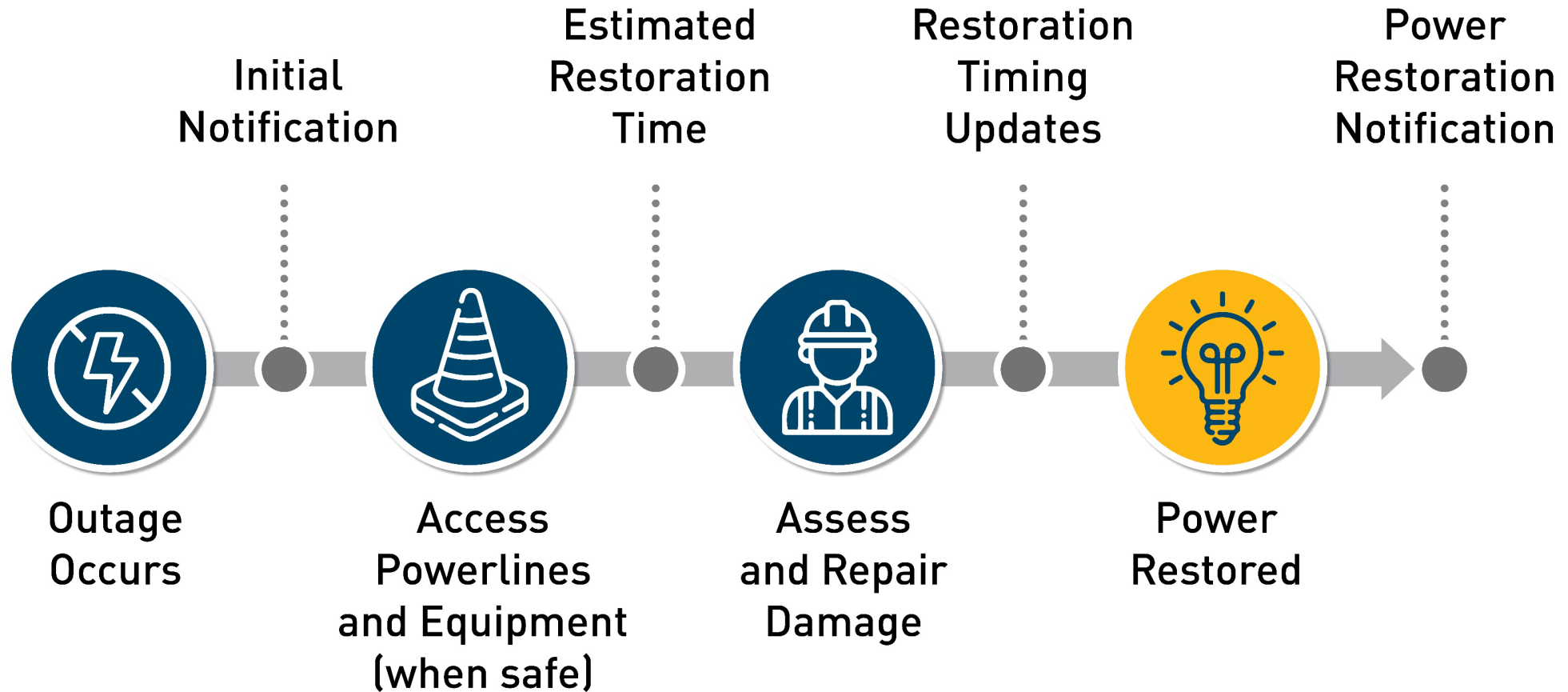
# Safety Settings, Step-By-Step



Some of the measures included in this presentation are contemplated as additional precautionary measures intended to further reduce the risk of wildfires.

Internal

# What Customers Can Expect



**i** Customers can find information on the status of an outage and the restoration process at [pge.com/outages](https://www.pge.com/outages)






# Differences Between Safety Settings and PSPS

## Enhanced Powerline Safety Settings (EPSS)

vs.

## Public Safety Power Shutoffs (PSPS)

 <b>WHY</b>	Automatically turning off power within one-tenth of a second <u>if</u> a problem is detected on the line	Proactively turning off power to prevent tree branches and debris from contacting energized lines
 <b>WHEN</b>	Elevated wildfire risk is present, most likely from May to November, but can occur year-round	During times of high winds, low humidity and dry vegetation
 <b>NOTIFICATIONS</b>	Regular updates after the outage occurs; advance notice cannot be provided because these are reactive and automatic settings	In advance through automated calls, texts, and emails with updates provided until power is restored

**i** Updates and information for both planned and unplanned outages: [pge.com/outages](https://www.pge.com/outages)



# Vegetation Management



**When trees are too close to powerlines, they can cause a power outage or a wildfire.**

**That's why each year we:**

- ✓ Inspect ~100,000 miles of powerlines
- ✓ Trim or cut down more than 1 million trees that pose a safety concern
- ✓ Address dead, dying or hazard trees



**We also reduce wildfire risk through additional vegetation work.**

**This year, across our service area we are:**

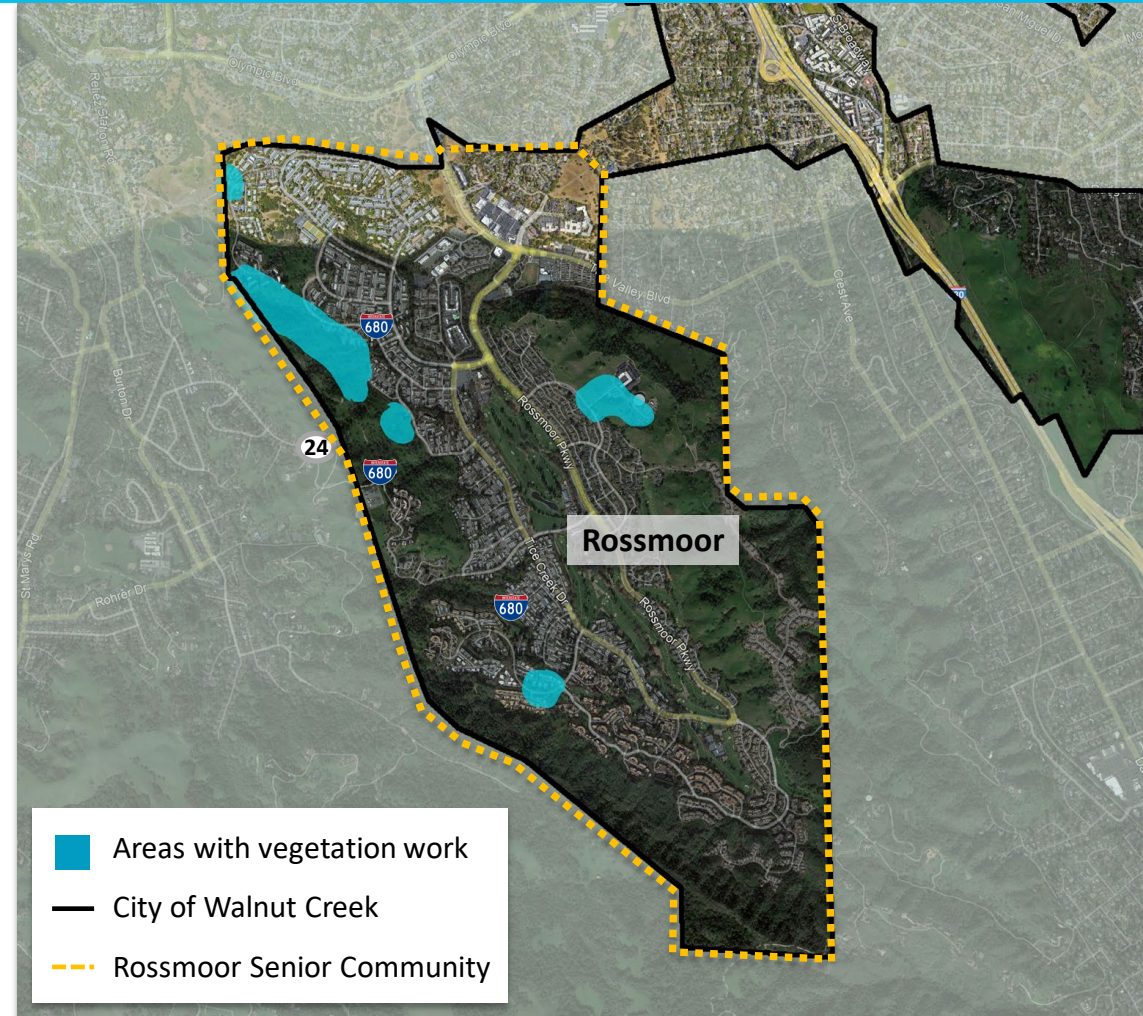
- ✓ Reviewing and cutting down trees identified through previous efforts that pose a safety concern
- ✓ Conducting additional inspections in high fire-risk areas near circuits with an increased risk for vegetation outages
- ✓ Trimming additional trees near circuits that have experienced a high volume of vegetation caused power outages






# Vegetation Management Work in Rossmoor

In 2023, we are inspecting approximately **100 trees** and performing work as needed.



 Learn more at [pge.com/trees](https://pge.com/trees)

# What to Expect During this Work

- ① **Sending advance notifications** to impacted property owners before work begins
- ② **Inspecting** for potential safety concerns
- ③ **Trimming or cutting down trees** as needed for safety
- ④ **Chipping** small debris and placing larger wood in a safe location on site
- ⑤ **Conducting safety and quality checks** through follow-up inspections



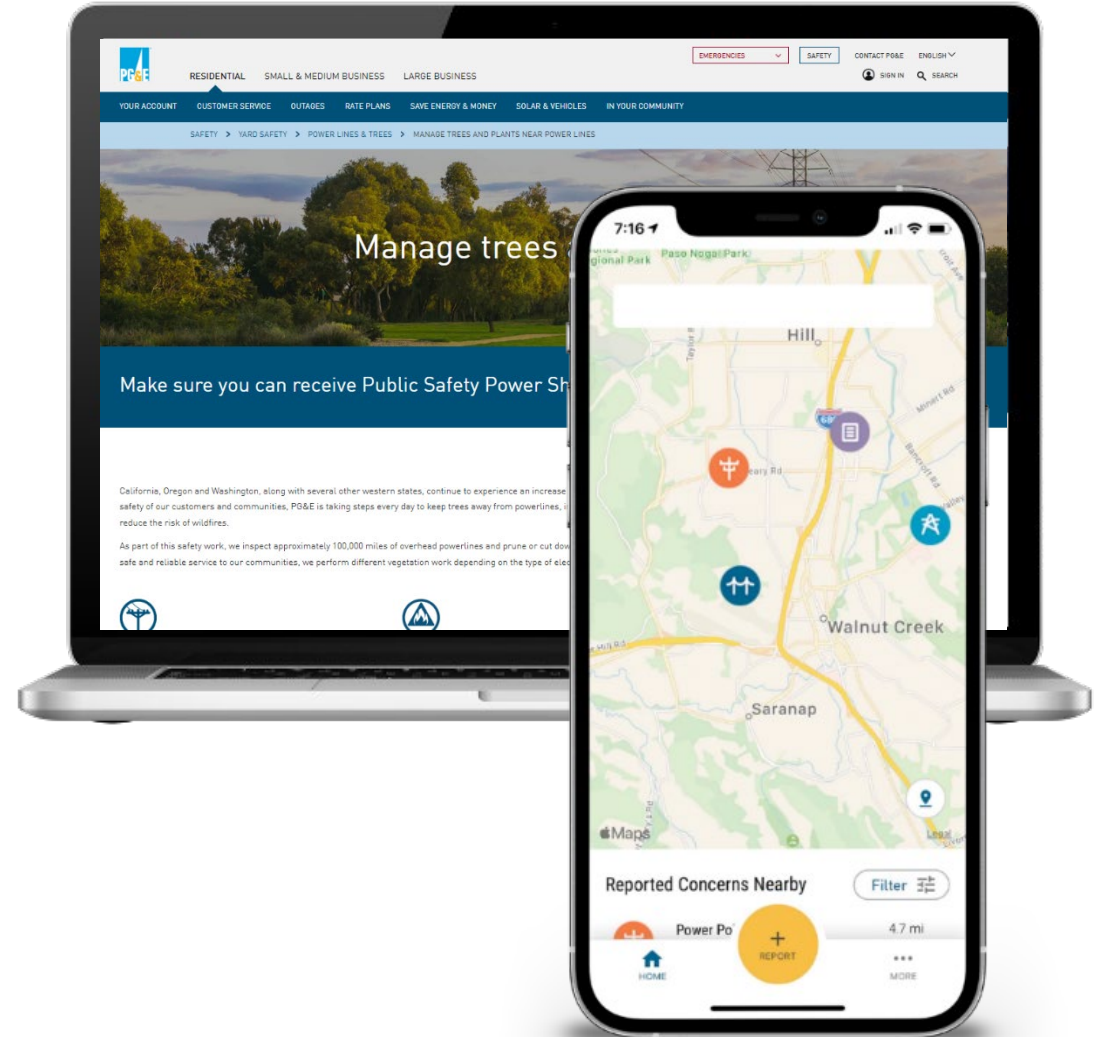




# Vegetation Management Community Resources

Customers can learn more about our efforts to keep trees away from powerlines by:

- ✓ Visiting us online at [pge.com/trees](https://pge.com/trees)
- ✓ Calling **1-800-PGE-5000**
- ✓ Downloading the “PG&E Report It” Safety App at [pge.com/reportit](https://pge.com/reportit)
  - Customers can submit photos of non-emergency safety concerns



# Q&A



**Thank You**



# Appendix



# Undergrounding 10,000 Miles of Our Electric System

**In 2021, PG&E announced a major new initiative to underground 10,000 miles of power lines in high fire-risk areas.**

This is approximately one-third of the miles PG&E has in high fire-risk areas.

.....

This commitment represents the largest effort in the U.S. to underground power lines as a wildfire risk reduction measure.







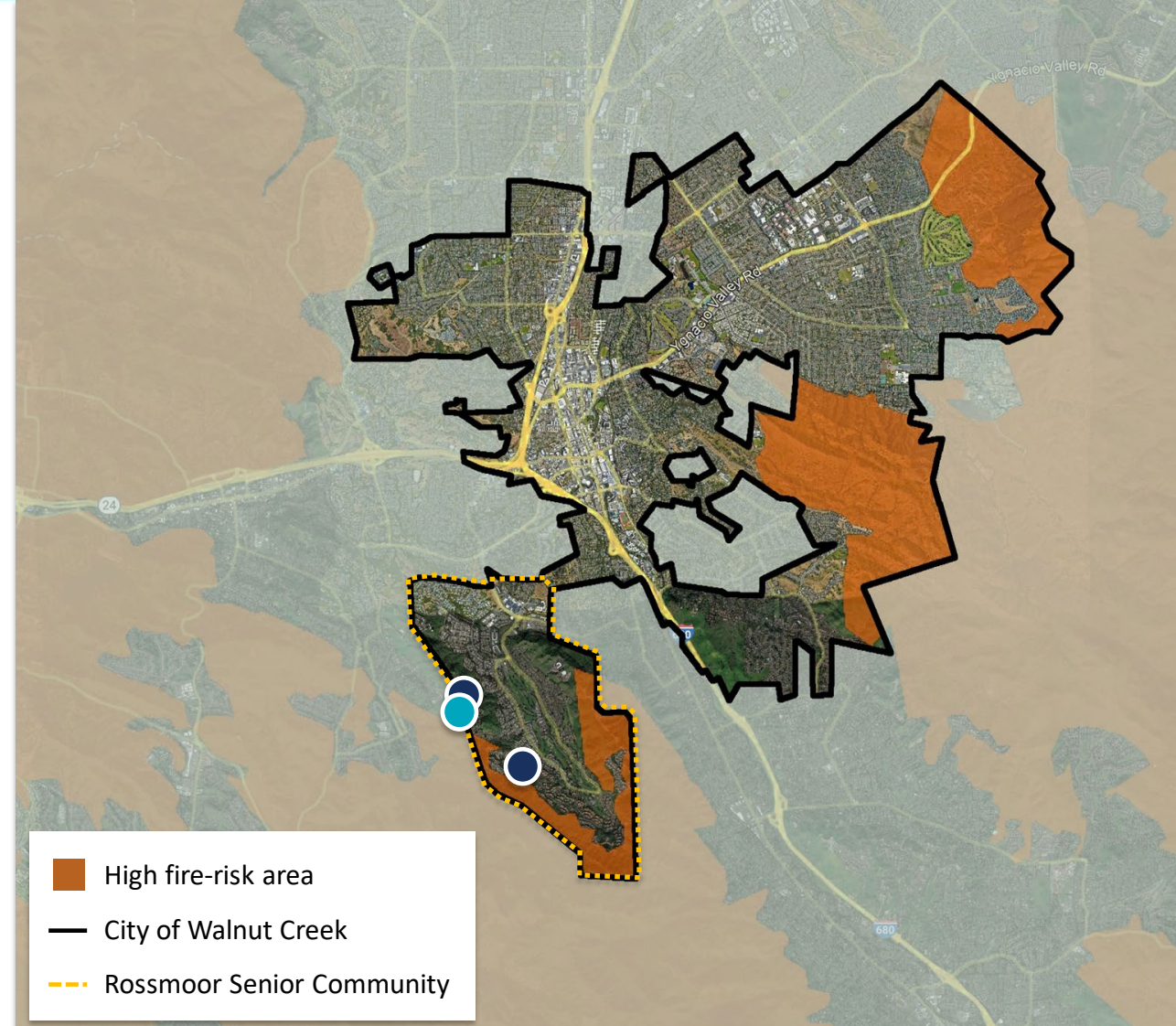
# Undergrounding and Overhead System Hardening in the City of Walnut Creek

Undergrounding miles completed through 2022 | <1

Overhead System Hardening miles completed through 2022 | 1

Customers can learn more at [pge.com/undergrounding](https://pge.com/undergrounding)

Customers can learn more at [pge.com/systemhardening](https://pge.com/systemhardening)



Data as of 6/30/2023 and does not include undergrounding work related to the California Public Utilities Commission's Rule 20 Program. Locations are approximate and may overlap. Work plans are subject to change due to weather, access and permitting. Annual mileage forecasts exceed annual targets.