



ROSSMOOR  
WALNUT CREEK

# Golden Rain Foundation Emergency Operations Plan

## EPO Presentation August 3, 2020



# Ellen Lopez and Associates Team

## Ellen Lopez

President

- Certified Emergency Manager  
30 Years of Experience  
County of Orange, CA  
City of Santa Monica, CA  
City of Anaheim, CA
- Emergency Management Assessment Program (EMAP) Assessor

## David Lopez

Vice President  
Project Manager

- Orange County Fire Authority 33 years
- Air Operations Branch Director on CalFire  
Incident Management Team #1
- Subject Matter Expert, Department of Defense (DoD)  
Support for Domestic Disaster Assistance



# The Planning Process





**Step 1**  
**Form a**  
**Collaborative**  
**Planning Team**

## **Planning Team**

Golden Rain Foundation

City of Walnut Creek

City of Lafayette

Contra Costa County Fire Protection District

County Office of Emergency Services

County ARC – Disabled and Functional Needs

Red Cross

Rossmoor CERT

Rossmoor Emergency Preparedness Organization



**Step 2**  
**Understand**  
**the**  
**Situation**

## **Gather Intelligence**

- Two Planning Team Meetings
- Tour of Alternate Entrances with City Personnel
- GRF Board Meetings
- City Council Meeting
- County OES Evacuation Planning Workshop
- Hazard Identification and Prioritization
- Risk Assessment to Determine Operational Priorities
- City of Walnut Creek Rossmoor Evacuation Tabletop



**Step 2**  
**Understand  
the  
Situation**

## Risk Assessment



**Landslide  
Earthquake  
Flood  
Severe Weather  
Wildfire**



## Step 2 Understand the Situation

**Secondary Impact:** What's the outcome? Loss of function, downtime, evacuations. **1=Negligible** to **4=High**

[illegible]



## Step 2 Understand the Situation

**Probability:** From **1=unlikely** to **4=highly likely**

**Affected Area:** How much of Rossmoor? **1=Isolated** to **4=Widespread**

**Primary Impact:** What's the damage? **1=Negligible** to **4=Catastrophic**

**Secondary Impact:** What's the outcome? Loss of function, downtime, evacuations. **1=Negligible** to **4=High**

Hazard Type	Probability		Impact						Sum of Factored Impacts	Total Score  (Sum of Factored Impacts) x (Factored Probability)	Hazard Planning Consideration		
			Affected Area		Primary Impact		Seconday Impact						
	Score	Factored x 2.0	Score	Factored x .8	Score	Factored x .7	Score	Factored x .5					
Earthquake	3	6	4	3.2	4	2.8	4	2	8	48	High		
Landslide	2	4	1	0.8	2	1.4	2	1	3.2	12.8		Medium	
Severe Weather	2	4	4	3.2	2	1.4	2	1	5.6	22.4		Medium	
Wildfire	3	6	3	2.4	2	1.4	3	1.5	5.3	31.8		Medium	
Flood	1	2	1	0.8	1	0.7	2	1	2.5	5			Low



**Step 2**  
**Understand  
the  
Situation**

# **Risk Assessment Prioritization for Rossmoor**

- 1. Earthquake**
- 2. Wildfire**
- 3. Severe Weather**
- 4. Landslide**
- 5. Flood**



**Step 3**  
**Plan**  
**Development**

## **Components of the Plan**

**Section 1:** Introductory Material

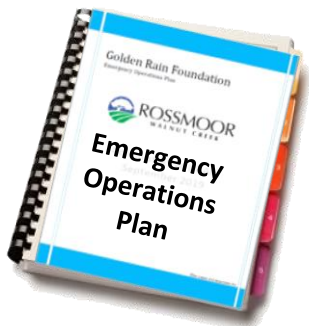
**Section 2:** Concept of Operations

**Section 3:** Organization and Responsibilities

**Section 4:** Rossmoor Operations Center (ROC) Management

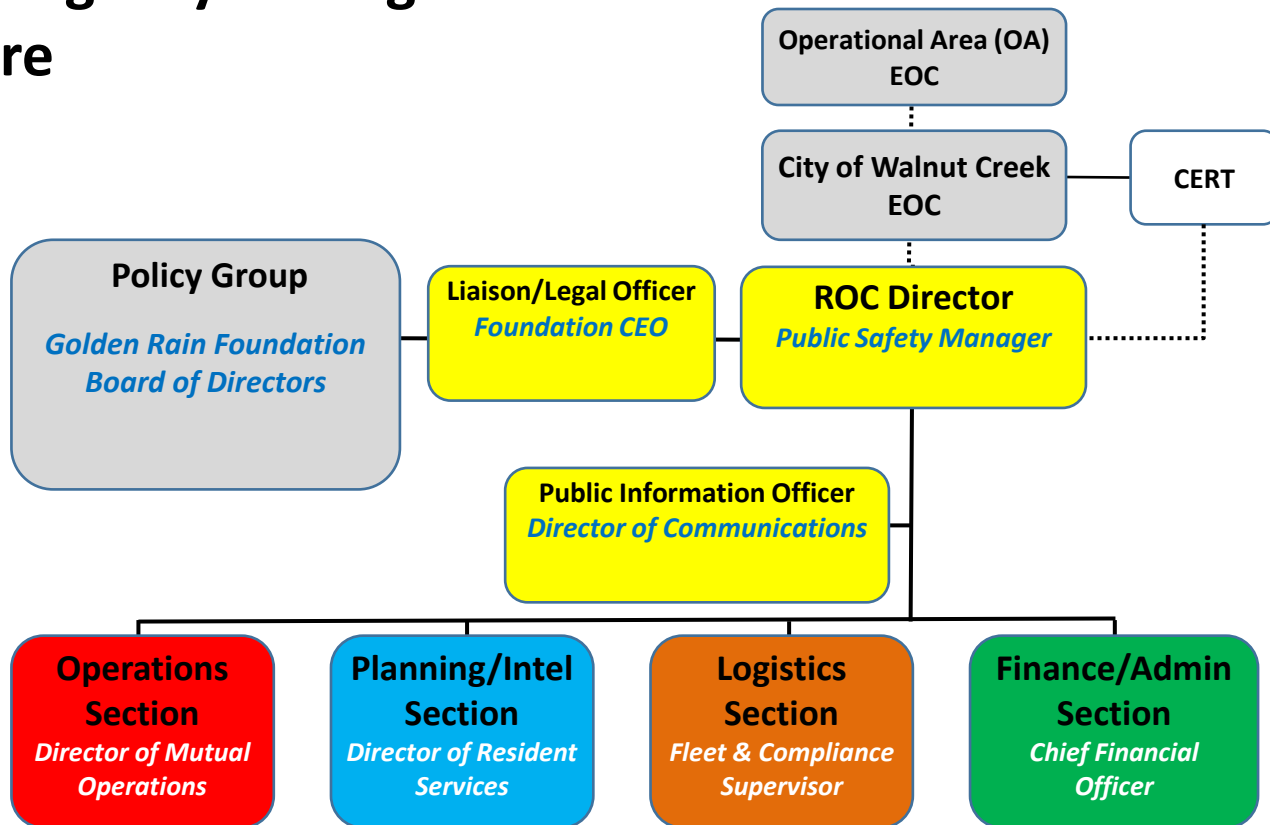
**Section 5:** Communication and Notification

**Appendices:** 16





# GRF Emergency Management Structure





**Step 4**  
**Plan**  
**Preparation,**  
**Review**

## **Administrative Draft Review**

Golden Rain Foundation Senior Staff

City of Walnut Creek

City of Lafayette

Contra Costa County Fire Protection District

County Office of Emergency Services

County ARC – Disabled and Functional Needs

Rossmoor CERT

Rossmoor Emergency Preparedness Organization

Rossmoor Community

Seven presentations, plan on website



# Evacuation

## APPENDIX E: EVACUATION

***The Golden Rain Foundation has no authority to order an evacuation.***

Only government public safety officials can issue and enforce evacuation orders.

The Golden Rain Foundation is working closely with the City of Walnut Creek to ensure the GRF EOP supports evacuation plans developed by the City of Walnut Creek.



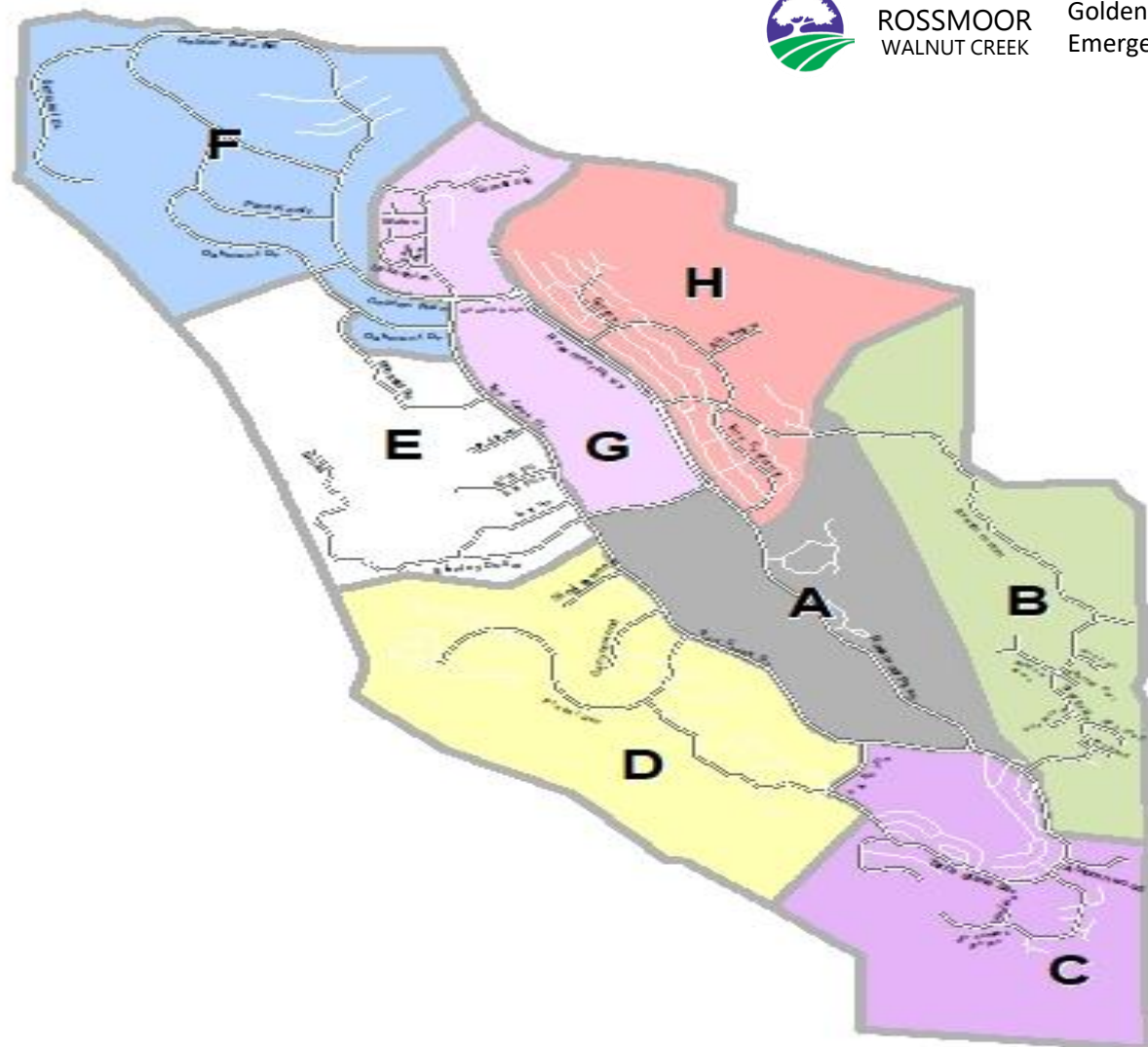
## Emergency Management Zones

- Eight Geographically Predefined Zones
- Allows for GRF to Manage Isolated Incidents
- Can be used by the City of Walnut Creek
  - ❑ Manage evacuations



ROSSMOOR  
WALNUT CREEK

Golden Rain Foundation  
Emergency Operations Plan





ROSSMOOR  
WALNUT CREEK

Golden Rain Foundation  
Emergency Operations Plan



# How Fire Could Impact Rossmoor

Weather

Fuel

Topography



ROSSMOOR  
WALNUT CREEK

Golden Rain Foundation  
Emergency Operations Plan



# Weather Fuel Topography



## Step 5

Approval

Implementation

Training/Socialization

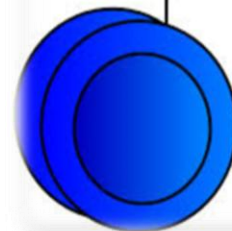
& Maintenance

- Approval
  - Board Meeting January 14, 2020
- Implementation
- Training/Socialization
  - Staff
  - Residents
- Review Every Two Years



# YOU'RE ON YOUR OWN

- ☐ 5 to 7 days
  - ☐ Water
  - ☐ Food
  - ☐ Medication
  - ☐ Other Supplies
  - ☐ Pets





ROSSMOOR  
WALNUT CREEK

Golden Rain Foundation  
Emergency Operations

# Rossmoor Notifications



[www.rossmoor.com](http://www.rossmoor.com)

**Text/email/voice**

**Phone Registration (925) 988-7688**



ROSSMOOR  
WALNUT CREEK

Golden Rain Foundation  
Emergency Operations Plan

***Questions?***